

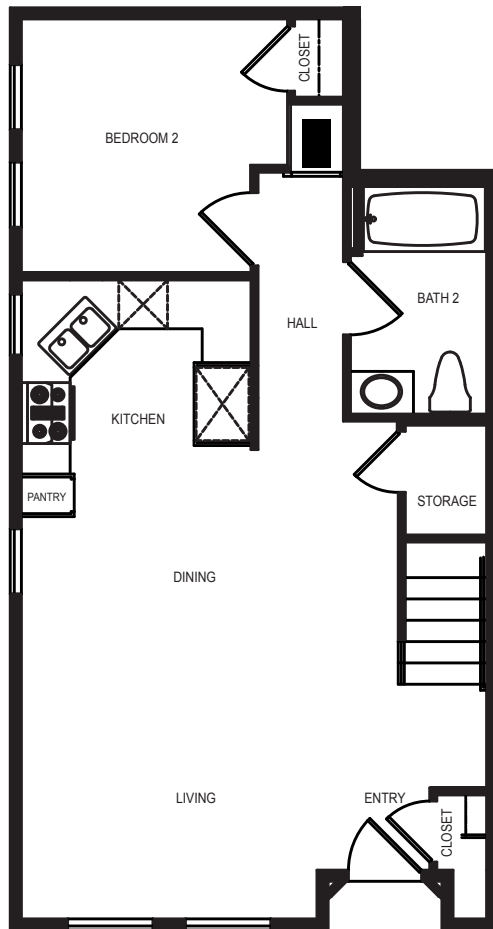


# PORTALVO

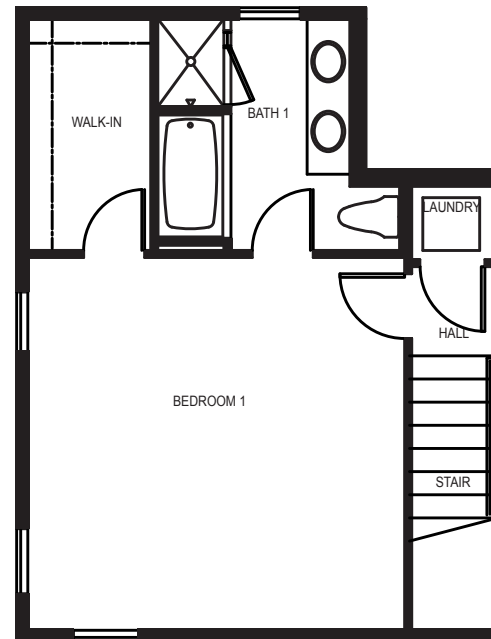
PLAN A

UNIT 101

1,112 SF | 2 BR 2 BA



LOWER FLOOR



UPPER FLOOR



In a continuous effort to make improvements, Anastasi Development Co, LLC reserves the right to change prices, optional items, floor plans, features, exterior designs, materials and specifications without prior notice or obligation. Lot sizes and square footage are approximate. Buyers to conduct and rely on their own investigation. See Sales Representative for details. 2023. Scott Anastasi Realty DRE Lic #01375056

**ANASTASI**  
DEVELOPMENT COMPANY, L.L.C.



# PORTALVO

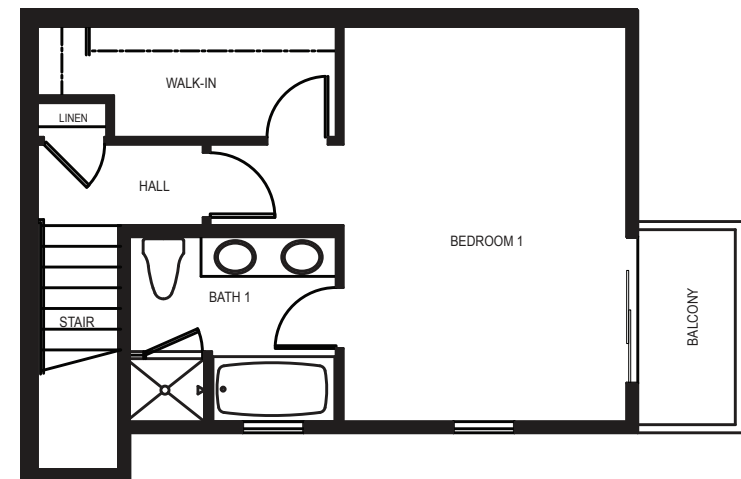
PLAN B

UNIT 102

1,334 SF | 2 BR 2 BA



LOWER FLOOR



UPPER FLOOR



In a continuous effort to make improvements, Anastasi Development Co, LLC reserves the right to change prices, optional items, floor plans, features, exterior designs, materials and specifications without prior notice or obligation. Lot sizes and square footage are approximate. Buyers to conduct and rely on their own investigation. See Sales Representative for details. 2023. Scott Anastasi Realty DRE Lic #01375056

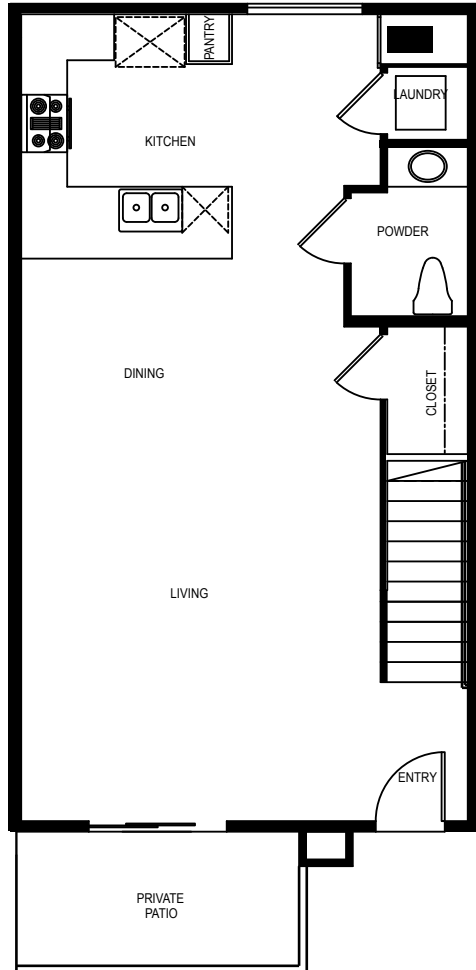
**ANASTASI**  
DEVELOPMENT COMPANY, L.L.C.



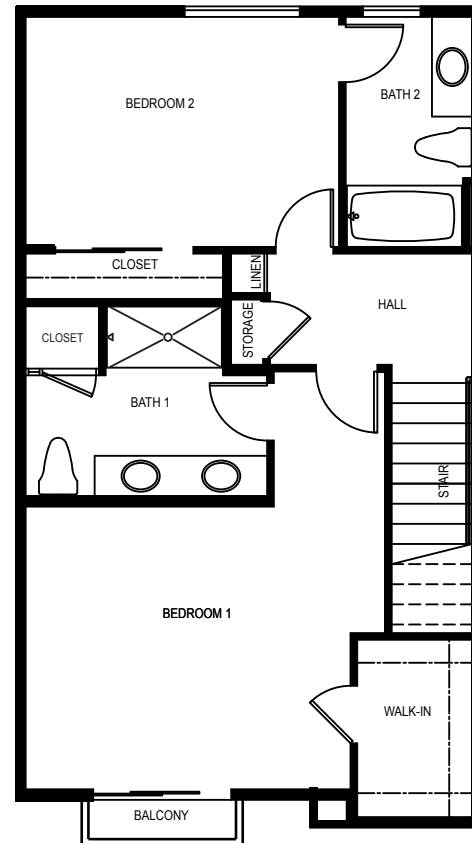
# PORTALVO

## PLAN C

UNITS 103, 104, 201-207, 209  
1,169 - 1,383 SF | 2 BR 2.5 BA



LOWER FLOOR



UPPER FLOOR



In a continuous effort to make improvements, Anastasi Development Co, LLC reserves the right to change prices, optional items, floor plans, features, exterior designs, materials and specifications without prior notice or obligation. Lot sizes and square footage are approximate. Buyers to conduct and rely on their own investigation. See Sales Representative for details. 2023. Scott Anastasi Realty DRE Lic #01375056

**ANASTASI**  
DEVELOPMENT COMPANY, L.L.C.

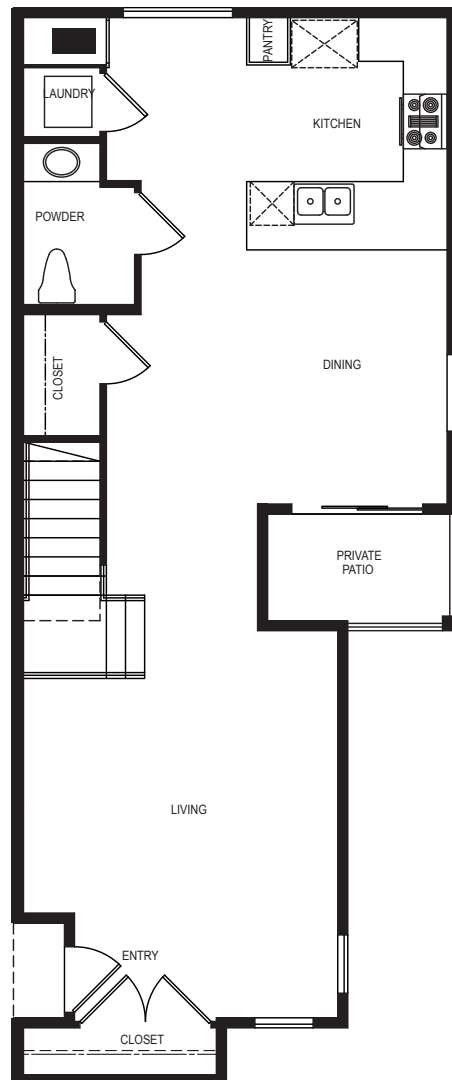


# PORTALVO

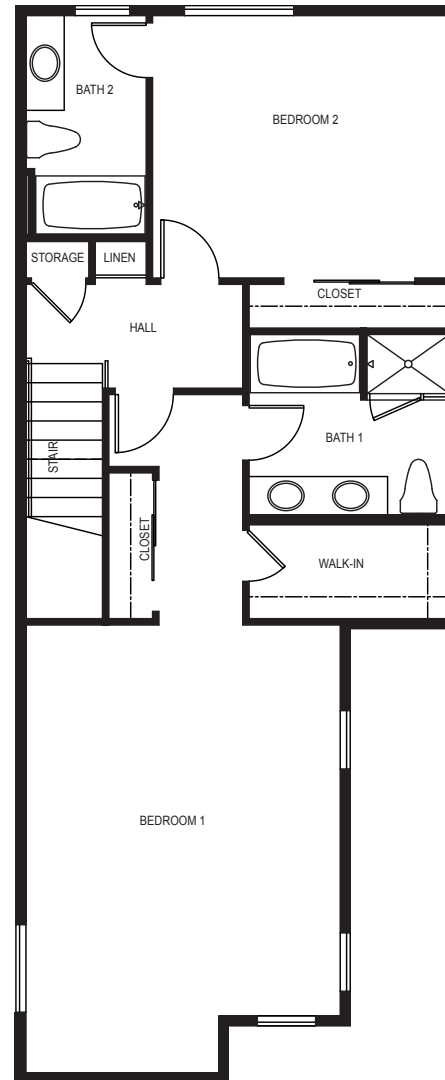
PLAN D

UNIT 208

1,606 SF | 2 BR 2.5 BA



LOWER FLOOR



UPPER FLOOR



In a continuous effort to make improvements, Anastasi Development Co, LLC reserves the right to change prices, optional items, floor plans, features, exterior designs, materials and specifications without prior notice or obligation. Lot sizes and square footage are approximate. Buyers to conduct and rely on their own investigation. See Sales Representative for details. 2023. Scott Anastasi Realty DRE Lic #01375056

**ANASTASI**  
DEVELOPMENT COMPANY, L.L.C.

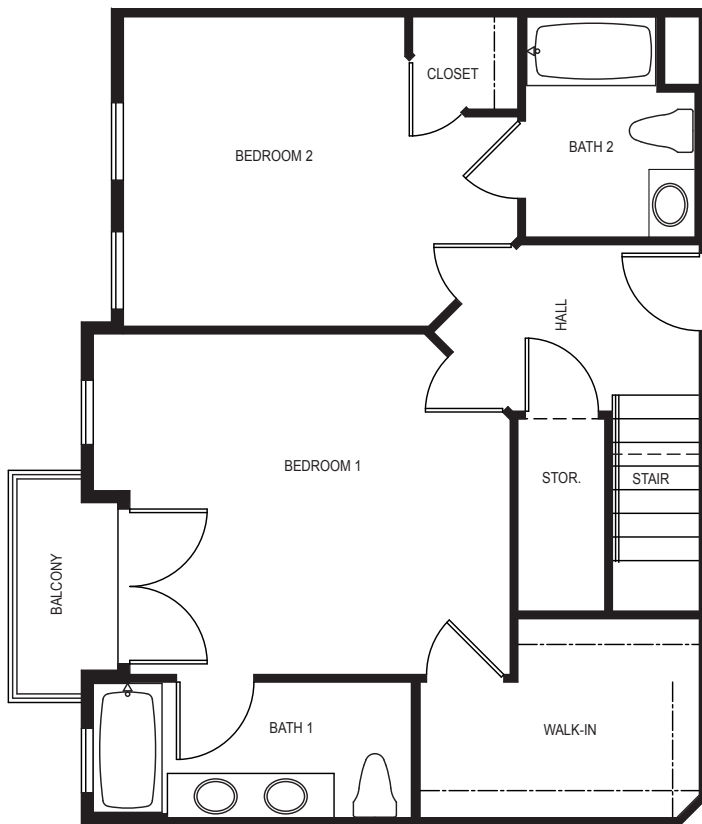


# PORTALVO

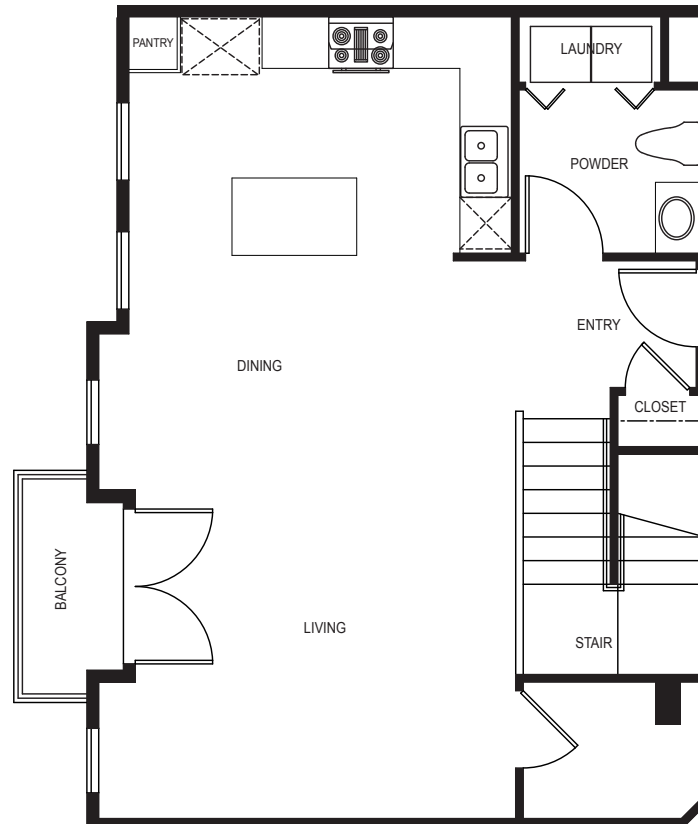
PLAN E

UNIT 303

1,432 SF | 2 BR 2.5 BA



LOWER FLOOR



UPPER FLOOR



In a continuous effort to make improvements, Anastasi Development Co, LLC reserves the right to change prices, optional items, floor plans, features, exterior designs, materials and specifications without prior notice or obligation. Lot sizes and square footage are approximate. Buyers to conduct and rely on their own investigation. See Sales Representative for details. 2023. Scott Anastasi Realty DRE Lic #01375056

**ANASTASI**  
DEVELOPMENT COMPANY, L.L.C.



# PORTALVO

PLAN F

UNIT 305

1,715 SF | 3 BR 2.5 BA



In a continuous effort to make improvements, Anastasi Development Co, LLC reserves the right to change prices, optional items, floor plans, features, exterior designs, materials and specifications without prior notice or obligation. Lot sizes and square footage are approximate. Buyers to conduct and rely on their own investigation. See Sales Representative for details. 2023. Scott Anastasi Realty DRE Lic #01375056

**ANASTASI**  
DEVELOPMENT COMPANY, L.L.C.

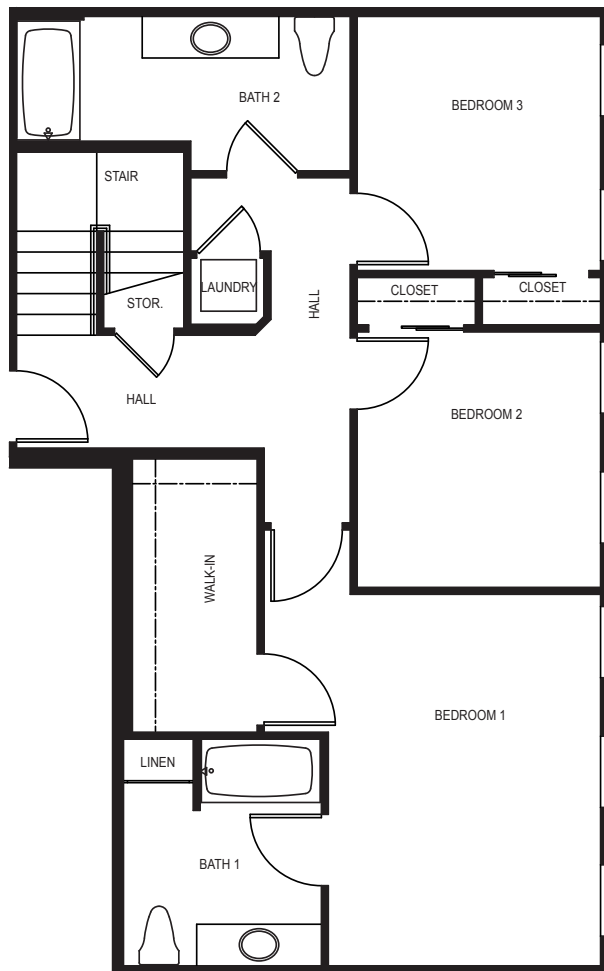


# PORTALVO

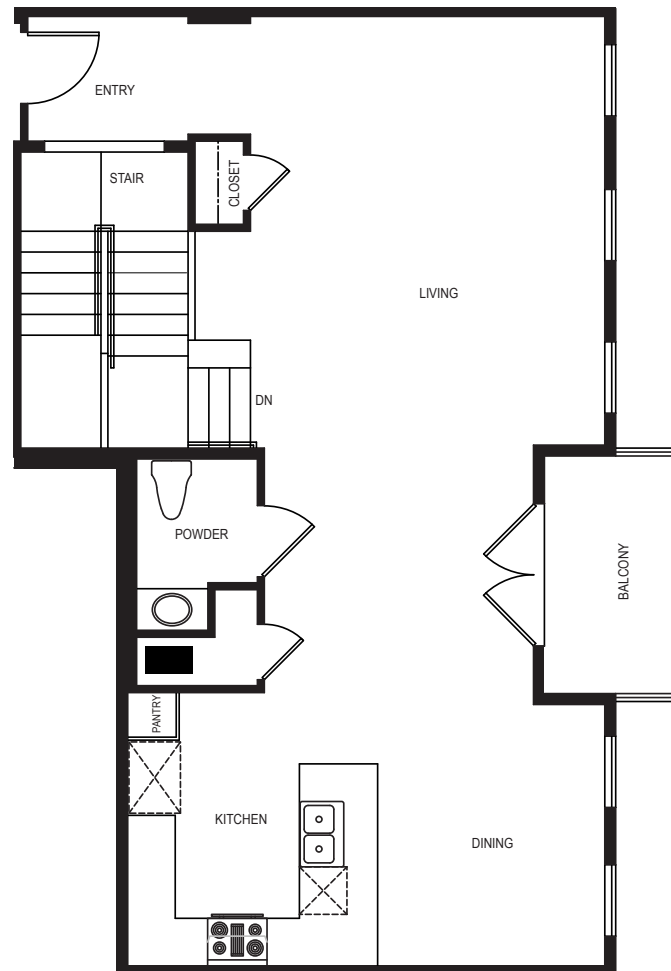
PLAN G

UNIT 306

1,766 SF | 3 BR 2.5 BA



LOWER FLOOR



UPPER FLOOR



In a continuous effort to make improvements, Anastasi Development Co, LLC reserves the right to change prices, optional items, floor plans, features, exterior designs, materials and specifications without prior notice or obligation. Lot sizes and square footage are approximate. Buyers to conduct and rely on their own investigation. See Sales Representative for details. 2023. Scott Anastasi Realty DRE Lic #01375056

**ANASTASI**  
DEVELOPMENT COMPANY, L.L.C.

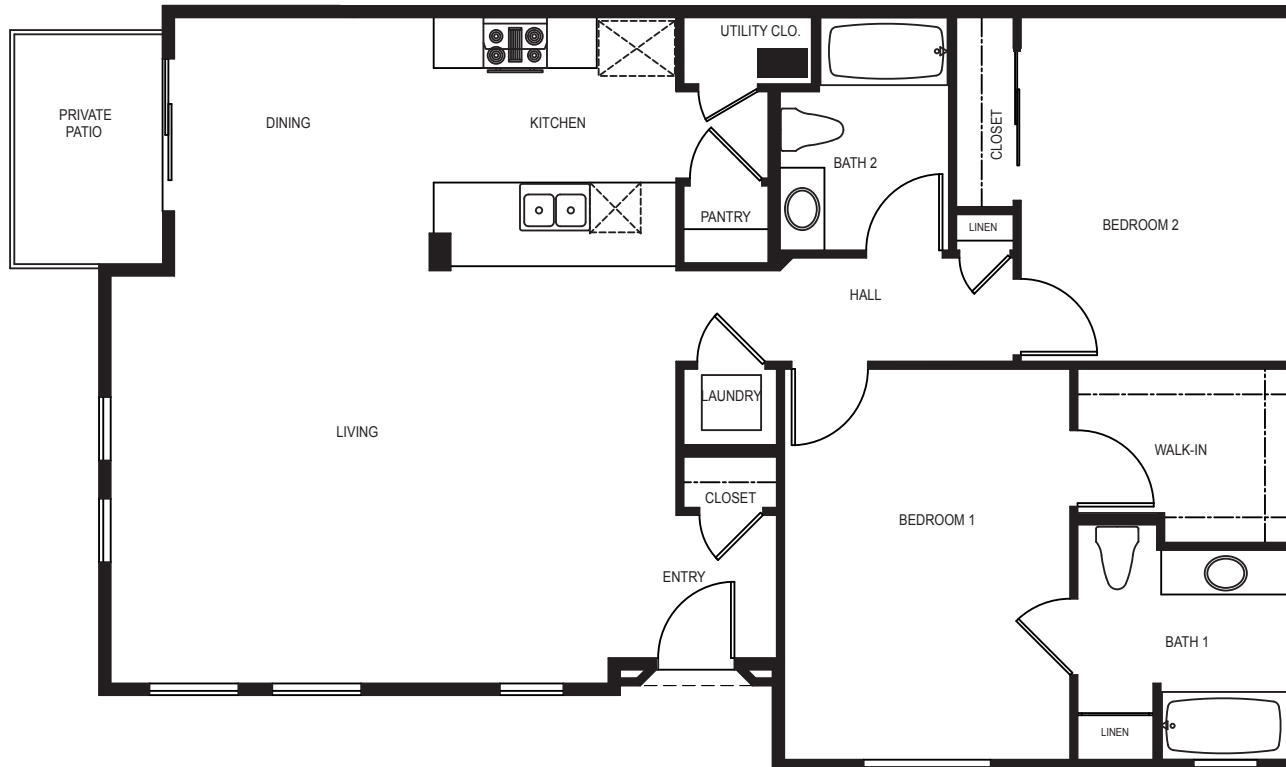


# PORTALVO

PLAN H

UNIT 106

1,256 SF | 2 BR 2.5 BA



In a continuous effort to make improvements, Anastasi Development Co, LLC reserves the right to change prices, optional items, floor plans, features, exterior designs, materials and specifications without prior notice or obligation. Lot sizes and square footage are approximate. Buyers to conduct and rely on their own investigation. See Sales Representative for details. 2023. Scott Anastasi Realty DRE Lic #01375056

**ANASTASI**  
DEVELOPMENT COMPANY, L.L.C.



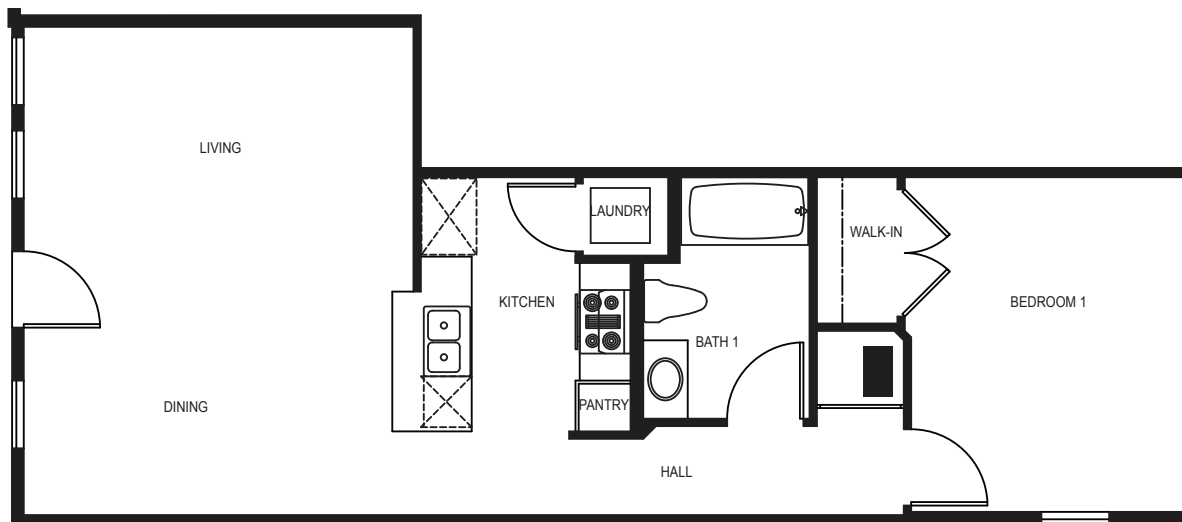


# PORTALVO

PLAN J

UNIT 105

722 SF | 1 BR 1 BA



In a continuous effort to make improvements, Anastasi Development Co, LLC reserves the right to change prices, optional items, floor plans, features, exterior designs, materials and specifications without prior notice or obligation. Lot sizes and square footage are approximate. Buyers to conduct and rely on their own investigation. See Sales Representative for details.  
2023. Scott Anastasi Realty DRE Lic #01375056

**ANASTASI**  
DEVELOPMENT COMPANY, L.L.C.

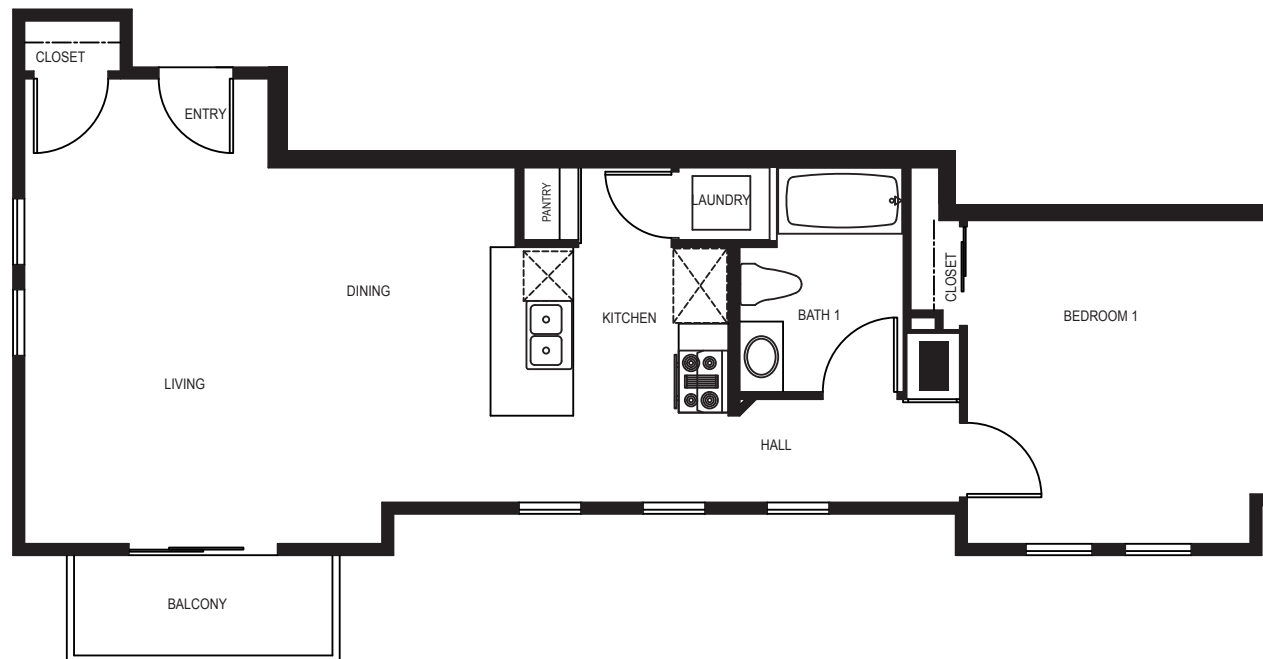


# PORTALVO

PLAN K

UNIT 211

752 SF | 1 BR 1 BA



In a continuous effort to make improvements, Anastasi Development Co, LLC reserves the right to change prices, optional items, floor plans, features, exterior designs, materials and specifications without prior notice or obligation. Lot sizes and square footage are approximate. Buyers to conduct and rely on their own investigation. See Sales Representative for details. 2023. Scott Anastasi Realty DRE Lic #01375056

**ANASTASI**  
DEVELOPMENT COMPANY, L.L.C.

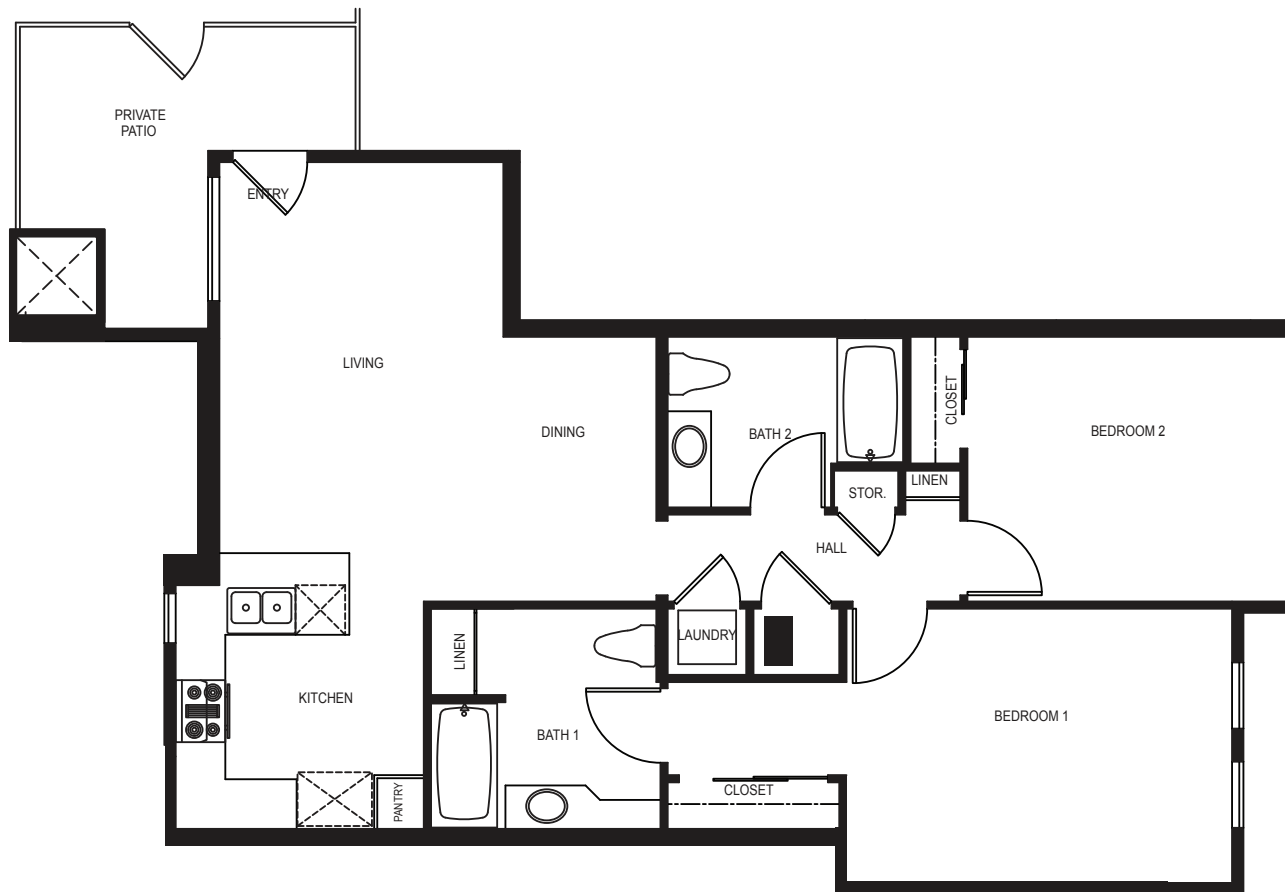


# PORTALVO

PLAN L

UNIT 210

933 SF | 2 BR 2 BA



In a continuous effort to make improvements, Anastasi Development Co, LLC reserves the right to change prices, optional items, floor plans, features, exterior designs, materials and specifications without prior notice or obligation. Lot sizes and square footage are approximate. Buyers to conduct and rely on their own investigation. See Sales Representative for details. 2023. Scott Anastasi Realty DRE Lic #01375056

**ANASTASI**  
DEVELOPMENT COMPANY, L.L.C.



# PORTALVO

## PLAN M

UNIT 201, 301

1,253 SF | 2 BR 2 BA



In a continuous effort to make improvements, Anastasi Development Co, LLC reserves the right to change prices, optional items, floor plans, features, exterior designs, materials and specifications without prior notice or obligation. Lot sizes and square footage are approximate. Buyers to conduct and rely on their own investigation. See Sales Representative for details. 2023. Scott Anastasi Realty DRE Lic #01375056

**ANASTASI**  
DEVELOPMENT COMPANY, L.L.C.

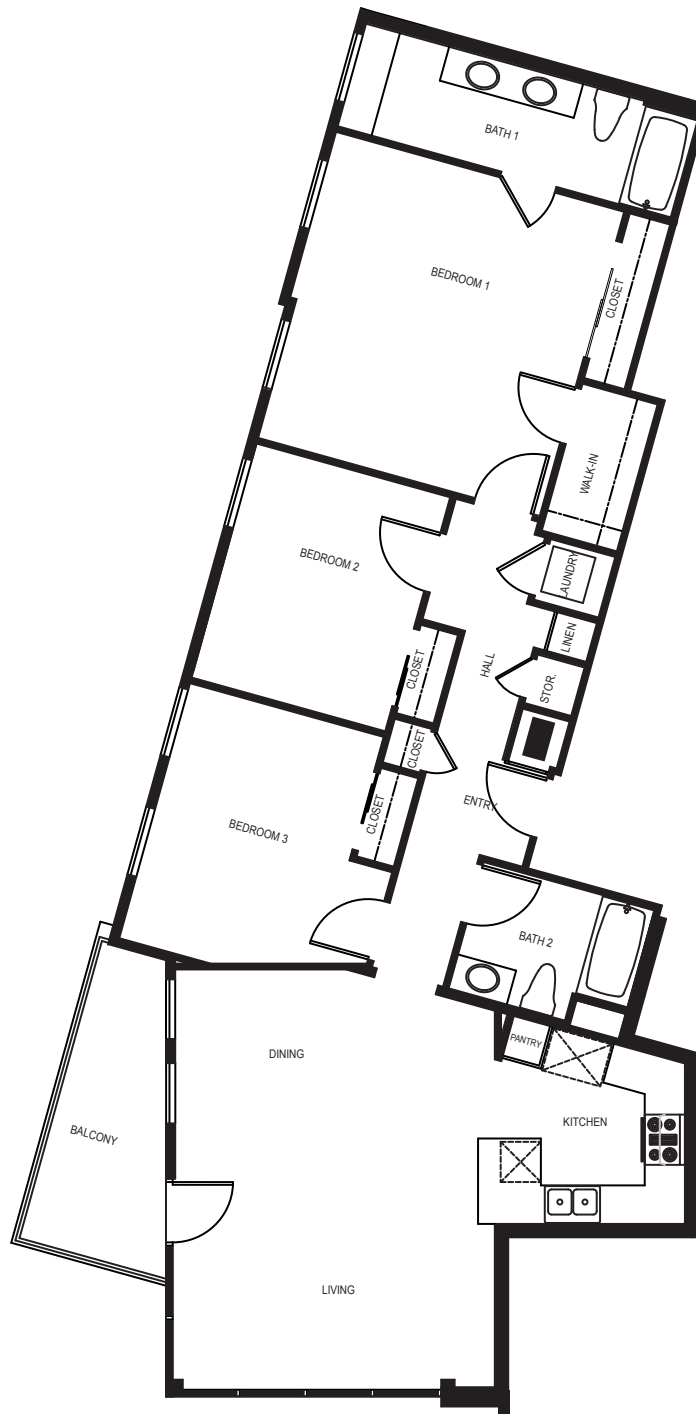


# PORTALVO

PLAN N

UNIT 202, 302

1,321 SF | 3 BR 2 BA



In a continuous effort to make improvements, Anastasi Development Co, LLC reserves the right to change prices, optional items, floor plans, features, exterior designs, materials and specifications without prior notice or obligation. Lot sizes and square footage are approximate. Buyers to conduct and rely on their own investigation. See Sales Representative for details. 2023. Scott Anastasi Realty DRE Lic #01375056

**ANASTASI**  
DEVELOPMENT COMPANY, L.L.C.



# PORTALVO

PLAN 0

UNIT 204, 304

1,054 SF | 2 BR 2 BA



In a continuous effort to make improvements, Anastasi Development Co, LLC reserves the right to change prices, optional items, floor plans, features, exterior designs, materials and specifications without prior notice or obligation. Lot sizes and square footage are approximate. Buyers to conduct and rely on their own investigation. See Sales Representative for details. 2023. Scott Anastasi Realty DRE Lic #01375056

**ANASTASI**  
DEVELOPMENT COMPANY, L.L.C.



# PORTALVO

2218 E MAIN ST  
&  
44 CORONADO STREET  
VENTURA, CALIFORNIA



In a continuous effort to make improvements, Anastasi Development Co, LLC reserves the right to change prices, optional items, floor plans, features, exterior designs, materials and specifications without prior notice or obligation. Lot sizes and square footage are approximate. Buyers to conduct and rely on their own investigation. See Sales Representative for details.  
2023. Scott Anastasi Realty DRE Lic #01375056

**ANASTASI**  
DEVELOPMENT COMPANY, L.L.C.



# PORTALVO

2218 E MAIN ST  
&  
44 CORONADO STREET  
VENTURA, CALIFORNIA

## INTERIOR FEATURES

- Wide plank hardwood flooring throughout main living areas including stairs and 2nd floor hallways
- Full sized LG front load washer and dryer (stacked)
- Air conditioning and central heat
- Structure wiring throughout includes CAT 6 phone and data, RG6 cable for TV
- Extensive use of LED puck lighting throughout
- Decorative white horizontal blinds throughout
- Spanish style front door
- Two panel interior doors with Milano FLP series Satin Nickel hardware
- Tankless water heater

## KITCHEN

- Stainless Steel LG appliance package including 3 door refrigerator, self-cleaning gas Smart Range with AirFry, microwave hood combo, and dishwasher
- Iced White quartz countertops with 1 ½" square eased edge
- Full tile back splash
- White or Grey European style cabinets with shaker style doors and drawer fronts. Fully concealed hinges, full extension with soft close drawer glides, satin nickel or traditional black door and drawer pulls.
- Under mount stainless steel sink with single lever faucet
- Decorative pendant light fixtures at peninsula cabinets on select plans

## BATHS

- Full size master bath shower with glass enclosure and stainless trim, makeup vanity in select models
- White or grey European style cabinets with shaker style doors and drawer fronts. Fully concealed hinges with satin nickel or traditional black finish hardware (per plan)
- Designer selected Porcelain tile floors
- Porcelain shower wall tile installed in the brick pattern
- Decorative matte black round mirror in powder bath
- Delta plumbing fixtures and bath accessories with stainless steel finishes
- Quartz countertops with 4 inch backsplash
- White porcelain under mount sinks



In a continuous effort to make improvements, Anastasi Development Co, LLC reserves the right to change prices, optional items, floor plans, features, exterior designs, materials and specifications without prior notice or obligation. Lot sizes and square footage are approximate. Buyers to conduct and rely on their own investigation. See Sales Representative for details.  
2023. Scott Anastasi Realty DRE Lic #01375056

**ANASTASI**  
DEVELOPMENT COMPANY, L.L.C.